



Human-machine Interface

Product Catalog

Corporate Profile



Kinco Automation (Shanghai) Ltd. and its subsidiary, Kinco Electric (Shenzhen) Ltd., are private high-tech enterprises specialized in the research, development, and production of automation products. Kinco controls such companies as JAT Kinco Electric Shenzhen Ltd., and Kinavo Servo Motor (Changzhou) Ltd., and owns two well-known brands, eView and Kinco. Kinco has established full line of automation products such as industrial human-machine interfaces, AC servo systems, stepper systems, PLC and industrial fieldbus products with proprietary intellectual property rights. Kinco has become a leading supplier of machine automation solutions in China.

Undertaking the mission of "Providing automation solutions to global customers", Kinco focuses on the development of automation technology since its founding. Now Kinco has acquired technology and knowledge for control, drive, human-machine interface and system integration. By adopting international standards and following the trends in automation industry, we developed PLC products compatible with IEC-61131-3 standard, intellectual AC servo drives, leading HMI products in China and fieldbus products. Kinco is capable of making customized products/solutions/services fit the customer's needs best based on our technology platform.

Kinco has established R&D centers in Shenzhen, Shanghai, Beijing, Changzhou and

Germany. We implement total quality management measures complying with ISO9001 standard throughout the marketing, R&D, production, and sales processes. We support our customers at home with a branch and distributor system covering mainland China. We appoint reliable partners to be distributors in overseas markets. Kinco is a customer-oriented company, always listening to customers' needs, cooperating with market leaders in emerging industries, providing first-rate automation solutions. Kinco products are widely used in industries such as textile machines, packaging machines, transportation systems and others. Kinco HMI is the No.1 domestic brands in China market. Kinco brand and products have been awarded by renowned media and organizations within the automation community.

Sticking to the business philosophy of "Caring people, pursuing excellence" and the value of "customer intimacy", Kinco advocates the corporate spirit of performance-oriented innovation, cooperation and efficiency. With the vision of "Automation creates wonderful life" in our minds, Kinco is always trying its best to be the partner of your every success and creates values for you.

Our Brand: **Kinco**® | **eView**®

CONTENTS

| | |
|-----------------------------|----|
| MT6000 Series | 02 |
| System description | |
| Hardware description | |
| Application description | |
| Technical specification | |
| Dimensions | |
| MT5000 Series | 07 |
| System description | |
| Hardware description | |
| Technical specification | |
| Dimensions | |
| MT4000 Series | 19 |
| System description | |
| Hardware description | |
| Technical specification | |
| Dimensions | |
| Software Description | 29 |

System Description

MT6000 is a brand new series of touch panel HMI (Human Machine Interface) for industrial automation applications and other applications such as building automation and home appliance control. Thanks to the powerful PXA270 CPU and user-friendly Windows CE operation system, MT6000 can bring you performance and flexibility.

Kinco has established partnership with several major software suppliers. Mutual benchmark tests ensure that their WinCE software products are fully compatible with the MT6000 hardware. Users of those software products can easily immigrate from other hardware platform to MT6000 with few projects modifications, in this way they can save their investments and reuse their experiences. Theoretically any software designed for Windows CE and XScale processor could run on MT6000.

The user can also develop their application programs with Microsoft Visual Studio development tool. We provide software development kit (SDK), necessary documents and technical support to help the users complete the software development.

With our 6-year experience in developing and manufacturing HMI touch panels in industrial automation fields, we clearly know what our customers need and the contemporary trend in automation world. MT6000 differences from many other competitors' products on communication interfaces. Besides the conventional serial ports, USB Host/Client ports and Ethernet port, MT6000 provides industrial standard CAN interface. A system expansion port is reserved on the board, which means adding other fieldbus or real-time Ethernet interfaces is very easy. Kinco will provide more fieldbus/RT Ethernet interface expansion options upon the requirement of our customers.

MT6000 Series Features

- XScale® PXA270 32-bit RISC CPU;
- Windows® CE 5.0 OS pre-installed;
- TFT LCD, screen size 5.7" ,8" and 10.4" ;
- Major HMI/SCADA and soft PLC software ready;
- SDK for developing proprietary application;
- Serial, Ethernet and CAN port;
- SD card slot for mass storage;
- Flexible expansion board.



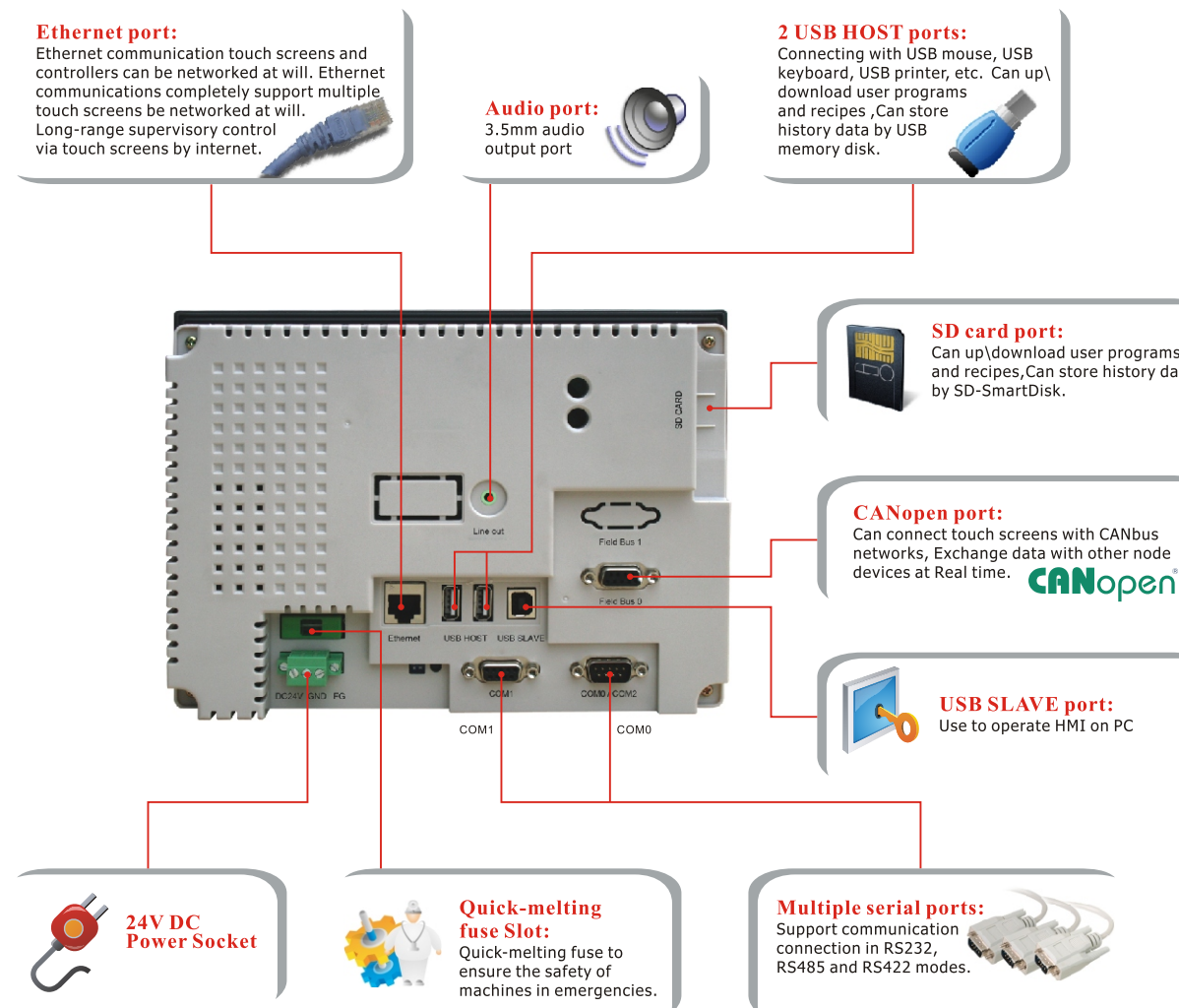
Hardware Description

Standard Configuration:

- Three RS-232/485/422 ports
- Two USB-HOST ports
- One USB SLAVE port
- One Ethernet Interface
- One Audio Output Interface
- One SD Card

Expandable Configuration:

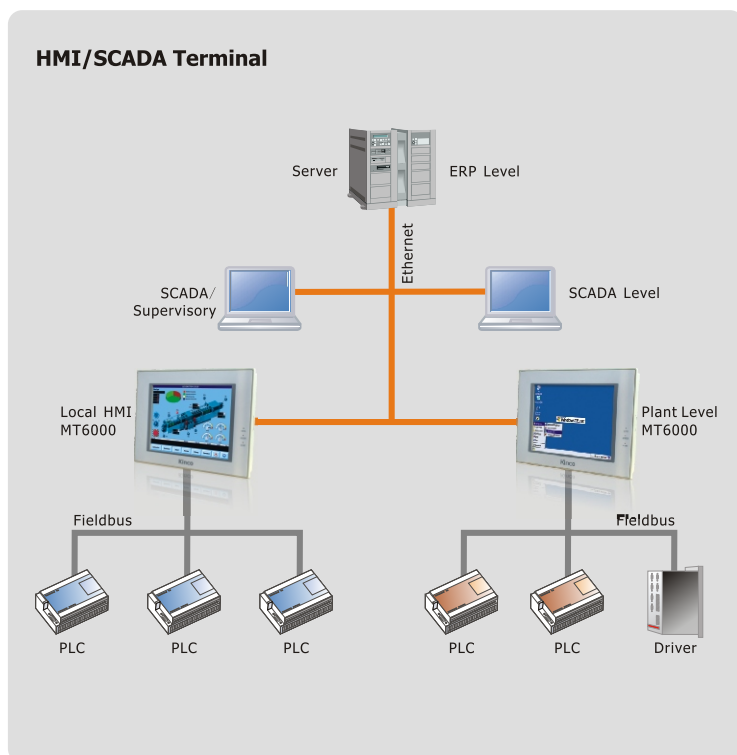
- CANopen Communication Card



Application Description

HMI/SCADA Terminal

HMI/SCADA software plays a critical role in today's factory management. MT6000 is a cost-effective choice for on-site HMI terminal. Ethernet interface ensure the easy connection into factory-level network and the smooth flow of data stream from the bottom to the top. SD card slot and USB port make the storage and transfer your invaluable data just a piece of cake. The TFT LCD display can show images of 65536 colors at VGA resolution. There are many HMI/SCADA software products in the market. Any software which can be used on a WinCE/ARMV4 platform is OK for MT6000.

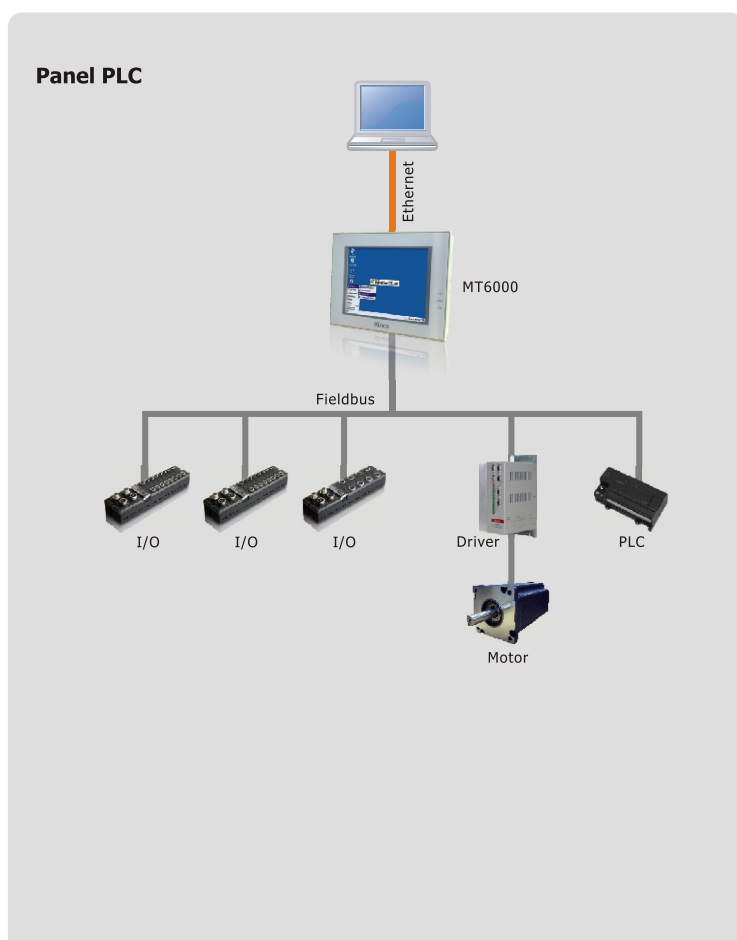


Panel PLC

Software-based logic controller is another hot topic in today's automation industry. With the powerful RISC processor, MT6000 can execute logic control task in a high-speed. Being a controller-HMI all-in-one integrated solution, the user could save cost and cabin space for mounting. We have cooperated with 3S, one of the leaders in soft-PLC market and made a customized version of CoDeSys runtime.



Besides the serial ports and Ethernet, we provide a CANopen interface which can be configured within the CoDeSys programming environment.



Other application

For users who want to develop their specific application, MT6000 can be used as a general-purpose embedded hardware platform. We provide the SDK tools and technical documents and telephone support to help the users complete their developments. The boundary of application is just limited by your imagination!

MT6000 Series Technical Specifications



MT6300



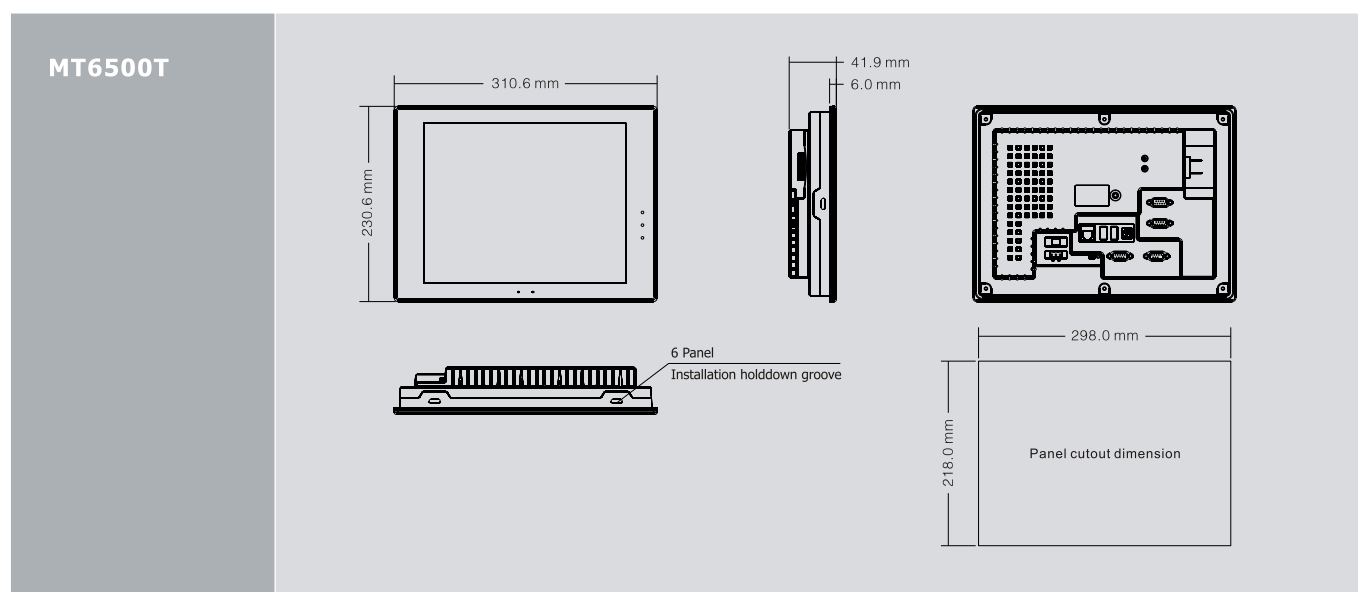
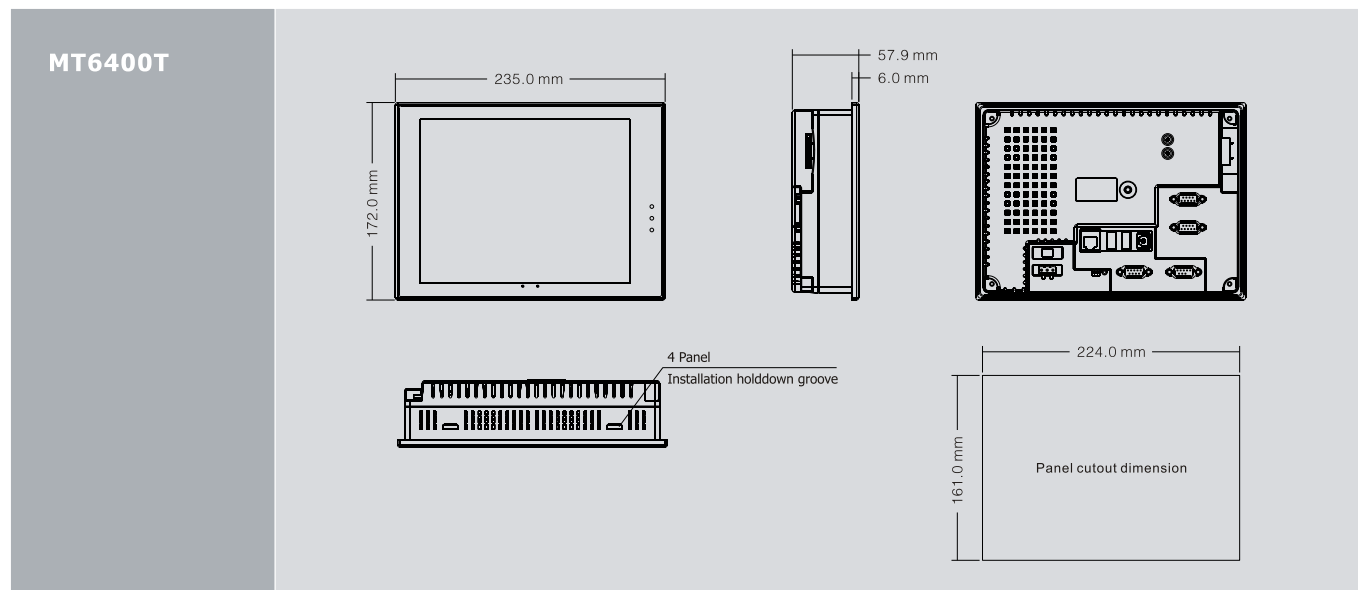
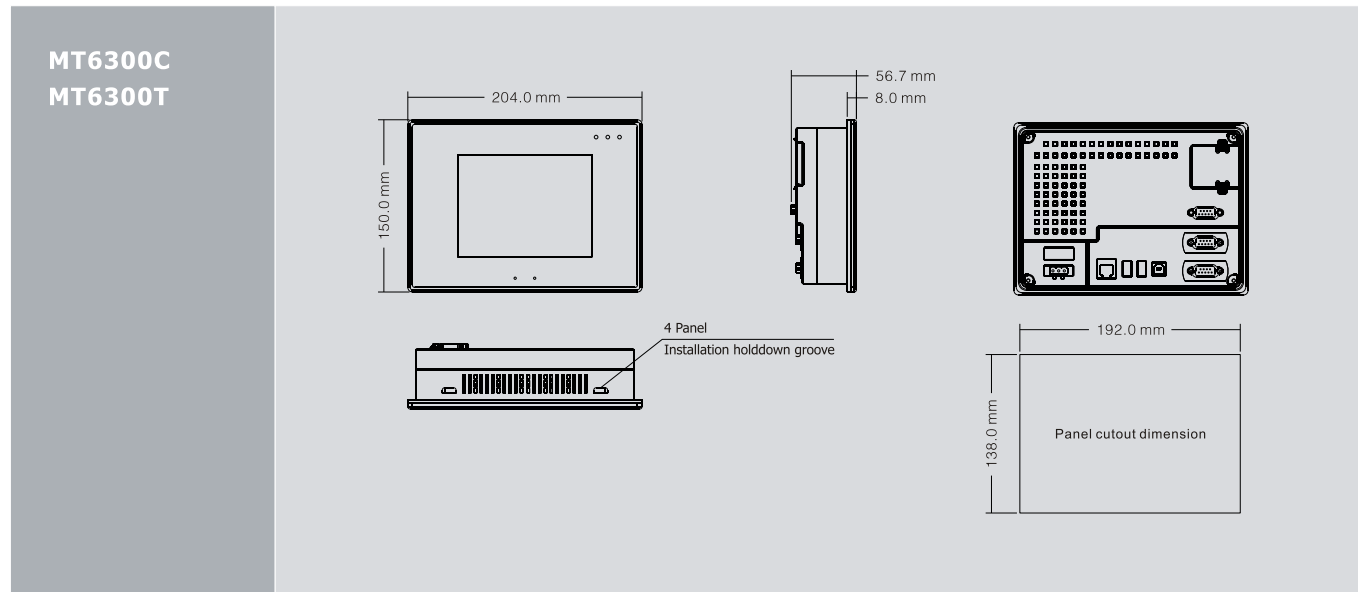
MT6400



MT6500

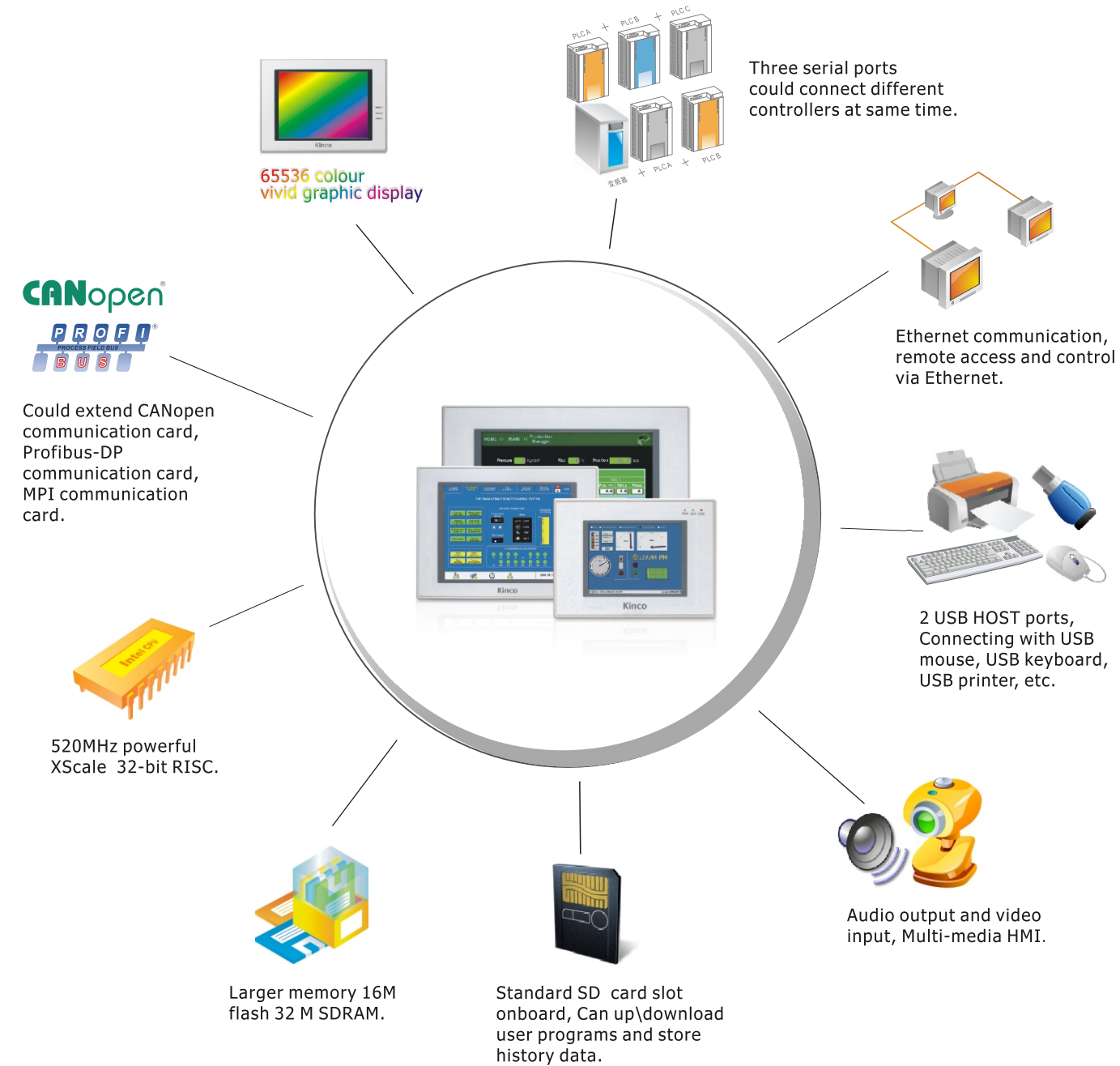
| Model | MT6300C | MT6300T | MT6400T | MT6500T |
|----------------------------------|--|--------------------------|----------------------|----------------------|
| Performance specification | | | | |
| Display | 5.6" TFT | 5.7" TFT | 8" TFT | 10.4" TFT |
| Resolution | 320×234 pixels | 320×240 pixels | 640×480 pixels | |
| Color | 65536 colors | | | |
| Backlight | LED | 1CCFL | | 2CCFL |
| Brightness | 300cd/m ² | 500cd/m ² | 350cd/m ² | 400cd/m ² |
| Backlight life | 50000 hr. | | | |
| Touch Panel | 4-wire precision resistance network | | | |
| Processor | 32-bit RISC CPU 520MHz | | | |
| Memory | 32M FLASH, 64M SDRAM | | | |
| Recipe memory & RTC | 512KB & RTC | | | |
| Expandable memory | SD Card, USB Stick | | | |
| Printer port | Connect a printer with a USB port via USB HOST port. | | | |
| Ethernet | 10/100 Base-T | | | |
| Audio interface | None | 1 Audio output interface | | |
| Program download | 1 USB SLAVE port, Ethernet port | | | |
| COM port | COM1:RS232/RS485-2/RS485-4, COM2:RS232/RS485-2/RS485-4 | | | |
| Video interface | None | | | |
| USB Host | 2 USB host ports for keyboard, mouse, printer, and etc. | | | |
| Communication module extending | CANopen interface expansion board | | | |
| Electrical specification | | | | |
| Rated power | 7.2W | 10.8 W | 12 W | |
| Rated voltage | DC24V | | | |
| Input range | DC21~DC28V | | | |
| Power down allowed | <5ms | | | |
| Insulation resistance | Greater than 50MΩ @ 500V DC | | | |
| Dielectric strength test | 500V AC 1 minute | | | |
| Structure specification | | | | |
| Shell color | Light-gray | | | |
| Shell material | ABS | | | |
| Dimensions(mm) | 204×150×56.7 | 235×172×57.9 | 310.6×230.6×55.7 | |
| Cutout size(mm) | 192×138 | 224×161 | 298×218 | |
| Weight | 0.96kg | 1.27kg | 2kg | |
| Environment specification | | | | |
| Operating temperature | 0~45℃ | -10~70℃ | 0~45℃ | |
| Operating humidity | 10~90% non-condensing | | | |
| Storage temperature | -10~60℃ | -30~80℃ | -10~60℃ | |
| Storage humidity | 10~90% non-condensing | | | |
| Shockproof test | 10~25Hz (X, Y, Z direction, 2G, 30 minutes) | | | |
| Cooling method | Natural air cooling | | | |
| Certification | | | | |
| Degree of protection | IP65 (front panel) | | | |
| CE certification | Comply with EN61000-6-2:2005 and EN61000-6-4:2007standards | | | |
| FCC compatibility | Complies with FCC Class A | | | |

Dimensions (Unit:mm)



System Description

MT5000 series HMI use INTEL 520MHz RISC CPU and LINUX operating system, have the easy learning configuration software, maintain the classic HMI design. It supports USB HOST function and SD card, and could manage data and preserve parameters online, you can quickly up/download user programs, and integrate the audio output; MT5000 series HMI integrate industry Ethernet and Fieldbus interface, could be linked with other screens in eView protocol, could communicate with other controllers via Ethernet interface in MODBUS TCP/IP protocol, could exchange data with controller via OPC software, could extend CANopen communication card and Profibus-DP communication card, connecting to the field bus network.



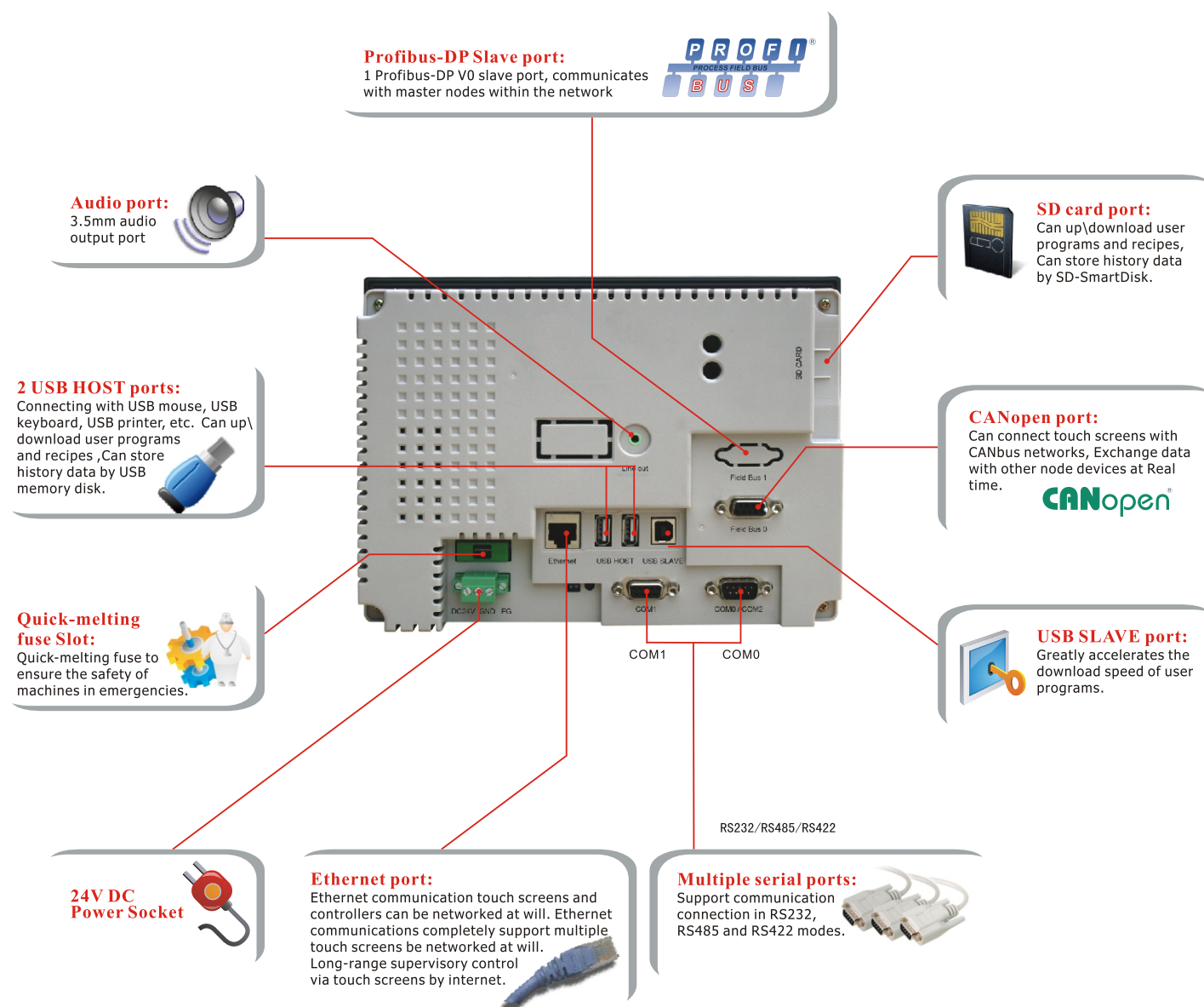
Hardware Description

Standard Configuration:

- Three RS-232/485/422 ports
- Two USB-HOST ports
- One USB SLAVE port
- One Ethernet Interface
- One Audio Output Interface
- Two Video input interface
- One SD Card

Expandable Configuration:

- Profibus-DP Communication Card
- CANopen Communication Card
- MPI Communication Card



MT5000 Series Features



- Higher performance and efficiency thanks to the 520MHz powerful XScale® 32-bit RISC processor;
- Larger and expansible memory for more complicated user application and data storage;
- Dual USB host ports compatible with peripherals like mouse, keyboard, printer and USB disk. Users can upload/download application and recipes data from/to the panel by using USB disk. Historical data can also be stored in the USB disk;
- Standard SD® card slot onboard
Just like the USB disk, SD® card can be used for uploading/downloading application and recipes data from/to the panel. Also, historical data can be stored in the card;
- 3.5mm audio output port for external speaker;
- Some models support two-channel video input interface, they can be used real-time monitoring on industrial fields;
- RJ45 Ethernet interface through which the panel can communicate with controllers and other panels, users can remotely get access to the panel via the internet also;
- Optional CANopen interface makes it possible for using the panel as a CAN node. With proper drivers, the panel can be used as a host or client. With MT5020, you CAN;
- The panel can exchange data with Profibus-DP node with the optional Profibus interface;
- With optional MPI interface, the panel can communicate with Siemens S7-300/400 without any costly adapters;
- 1 USB slave port for downloading application data from the PC faster than via serial port;
- 65536 color TFT LCD ensures vivid graphic display.

MT5000 Series

Technical Specifications



| Model | MT5320C | MT5320C-DP | MT5320C-CAN | MT5320C-MPI |
|----------------------------------|--|-------------|-------------|-------------|
| Performance specification | | | | |
| Display | 5.6" TFT | | | |
| Resolution | 320×234 pixels | | | |
| Color | 65536 colors | | | |
| Backlight | LED | | | |
| Brightness | 300cd/m ² | | | |
| Backlight life | 50000 hr. | | | |
| Touch Panel | 4-wire precision resistance network | | | |
| Processor | 32-bit RISC CPU 520MHz | | | |
| Memory | 8M FLASH, 16M SDRAM | | | |
| Recipe memory & RTC | 512KB & RTC | | | |
| Expandable memory | 1 SD Card, 2 USB HOST | | | |
| Printer port | USB/Serial port | | | |
| Ethernet | 10/100 Base-T | | | |
| Audio interface | None | | | |
| Vedio interface | None | | | |
| Program download | 1 USB SLAVE port/Serial port/Ethernet port | | | |
| COM port | COM0:RS232/RS485-2/RS485-4, COM1:RS232/RS485-2/RS485-4, COM2:RS232 | | | |
| Expansion port | None | Profibus-DP | CANopen | MPI |
| Electrical specification | | | | |
| Rated power | 7.2 W | | | |
| Rated voltage | DC24V | | | |
| Input range | 21~28VDC | | | |
| Momentary power-off | <3ms | | | |
| Insulation resistance | Greater than 50MΩ @ 500V DC | | | |
| Dielectric strength test | 500V AC 1 minute | | | |
| Structure specification | | | | |
| Shell color | Light-gray | | | |
| Shell material | ABS | | | |
| Dimensions(mm) | 204×150×56.7 | | | |
| Cutout size(mm) | 192×138 | | | |
| Weight | 0.96kg | | | |
| Environment specification | | | | |
| Operating temperature | -10~70℃ | | | |
| Operating humidity | 10~90% non-condensing | | | |
| Storage temperature | -30~80℃ | | | |
| Storage humidity | 10~90% non-condensing | | | |
| Shockproof test | 10~25Hz (X, Y, Z direction, 2G, 30 minutes) | | | |
| Cooling method | Natural air cooling | | | |
| Certification | | | | |
| Degree of protection | IP65 (front panel) | | | |
| CE certification | Comply with EN61000-6-2:2005 and EN61000-6-4:2007standards | | | |
| FCC compatibility | Complies with FCC Class A | | | |

MT5000 Series

Technical Specifications



| Model | MT5320T | MT5320T-DP | MT5320T-CAN | MT5320T-MPI |
|----------------------------------|--|-------------|-------------|-------------|
| Performance specification | | | | |
| Display | 5.7" TFT | | | |
| Resolution | 320×240 pixels | | | |
| Color | 65536 colors | | | |
| Backlight | 1CCFL | | | |
| Brightness | 500cd/m ² | | | |
| Backlight life | 50000 hr. | | | |
| Touch Panel | 4-wire precision resistance network | | | |
| Processor | 32-bit RISC CPU 520MHz | | | |
| Memory | 8M FLASH, 16M SDRAM | | | |
| Recipe memory & RTC | 512KB & RTC | | | |
| Expandable memory | 1 SD Card, 2 USB HOST | | | |
| Printer port | USB/Serial port | | | |
| Ethernet | 10/100 Base-T | | | |
| Audio interface | None | | | |
| Vedio interface | None | | | |
| Program download | 1 USB SLAVE port/Serial port/Ethernet port | | | |
| COM port | COM0:RS232/RS485-2/RS485-4, COM1:RS232/RS485-2/RS485-4, COM2:RS232 | | | |
| Expansion port | None | Profibus-DP | CANopen | MPI |
| Electrical specification | | | | |
| Rated power | 7.2 W | | | |
| Rated voltage | DC24V | | | |
| Input range | 21~28VDC | | | |
| Momentary power-off | <3ms | | | |
| Insulation resistance | Greater than 50MΩ @ 500V DC | | | |
| Dielectric strength test | 500V AC 1 minute | | | |
| Structure specification | | | | |
| Shell color | Light-gray | | | |
| Shell material | ABS | | | |
| Dimensions(mm) | 204×150×56.7 | | | |
| Cutout size(mm) | 192×138 | | | |
| Weight | 0.96kg | | | |
| Environment specification | | | | |
| Operating temperature | -10~70℃ | | | |
| Operating humidity | 10~90% non-condensing | | | |
| Storage temperature | -30~80℃ | | | |
| Storage humidity | 10~90% non-condensing | | | |
| Shockproof test | 10~25Hz (X, Y, Z direction, 2G, 30 minutes) | | | |
| Cooling method | Natural air cooling | | | |
| Certification | | | | |
| Degree of protection | IP65 (front panel) | | | |
| CE certification | Comply with EN61000-6-2:2005 and EN61000-6-4:2007standards | | | |
| FCC compatibility | Complies with FCC Class A | | | |

MT5000 Series

Technical Specifications



| Model | MT5420T | MT5420T-DP | MT5420T-CAN | MT5420T-MPI |
|----------------------------------|--|-------------|-------------|-------------|
| Performance specification | | | | |
| Display | 8" TFT | | | |
| Resolution | 640×480 pixels | | | |
| Color | 65536 | | | |
| Backlight | 1CCFL | | | |
| Brightness | 350cd/m ² | | | |
| Backlight life | 50000 hr. | | | |
| Touch Panel | 4-wire precision resistance network | | | |
| Processor | 32-bit RISC CPU 520MHz | | | |
| Memory | 16M FLASH, 32M SDRAM | | | |
| Recipe memory & RTC | 512KB & RTC | | | |
| Expandable memory | 1 SD Card, 2 USB HOST | | | |
| Printer port | USB/Serial port | | | |
| Ethernet | 10/100 Base-T | | | |
| Audio interface | 1 Audio output interface | | | |
| Vedio interface | None | | | |
| Program download | 1 USB SLAVE port/Serial port/Ethernet port | | | |
| COM port | COM0:RS232/RS485-2/RS485-4, COM1:RS232/RS485-2/RS485-4, COM2:RS232 | | | |
| Expansion port | None | Profibus-DP | CANopen | MPI |
| Electrical specification | | | | |
| Rated power | 10.8 W | | | |
| Rated voltage | DC24V | | | |
| Input range | 21~28VDC | | | |
| Momentary power-off | <3ms | | | |
| Insulation resistance | Greater than 50MΩ @ 500V DC | | | |
| Dielectric strength test | 500V AC 1 minute | | | |
| Structure specification | | | | |
| Shell color | Light-gray | | | |
| Shell material | ABS | | | |
| Dimensions(mm) | 235×172×57.9 | | | |
| Cutout size(mm) | 224×161 | | | |
| Weight | 1.27kg | | | |
| Environment specification | | | | |
| Operating temperature | 0~45℃ | | | |
| Operating humidity | 10~90% non-condensing | | | |
| Storage temperature | -10~60℃ | | | |
| Storage humidity | 10~90% non-condensing | | | |
| Shockproof test | 10~25Hz (X, Y, Z direction, 2G, 30 minutes) | | | |
| Cooling method | Natural air cooling | | | |
| Certification | | | | |
| Degree of protection | IP65 (front panel) | | | |
| CE certification | Comply with EN61000-6-2:2005 and EN61000-6-4:2007standards | | | |
| FCC compatibility | Complies with FCC Class A | | | |

MT5000 Series

Technical Specifications



| Model | MT5423T | MT5423T-DP | MT5423T-CAN | MT5423T-MPI |
|----------------------------------|--|-------------|-------------|-------------|
| Performance specification | | | | |
| Display | 8" TFT | | | |
| Resolution | 800×600 pixels | | | |
| Color | 65536 | | | |
| Backlight | LED | | | |
| Brightness | 300cd/m ² | | | |
| Backlight life | 50000 hr. | | | |
| Touch Panel | 4-wire precision resistance network | | | |
| Processor | 32-bit RISC CPU 520MHz | | | |
| Memory | 16M FLASH, 32M SDRAM | | | |
| Recipe memory & RTC | 512KB & RTC | | | |
| Expandable memory | 1 SD Card, 2 USB HOST | | | |
| Printer port | USB/Serial port | | | |
| Ethernet | 10/100 Base-T | | | |
| Audio interface | 1 Audio output interface | | | |
| Vedio interface | None | | | |
| Program download | 1 USB SLAVE port/Serial port/Ethernet port | | | |
| COM port | COM0:RS232/RS485-2/RS485-4, COM1:RS232/RS485-2/RS485-4, COM2:RS232 | | | |
| Expansion port | None | Profibus-DP | CANopen | MPI |
| Electrical specification | | | | |
| Rated power | 8 W | | | |
| Rated voltage | DC24V | | | |
| Input range | 12~28VDC | | | |
| Momentary power-off | <3ms | | | |
| Insulation resistance | Greater than 50MΩ @ 500V DC | | | |
| Dielectric strength test | 500V AC 1 minute | | | |
| Structure specification | | | | |
| Shell color | Light-gray | | | |
| Shell material | ABS | | | |
| Dimensions(mm) | 235×172×57.9 | | | |
| Cutout size(mm) | 224×161 | | | |
| Weight | 1.27kg | | | |
| Environment specification | | | | |
| Operating temperature | 0~45℃ | | | |
| Operating humidity | 10~90% non-condensing | | | |
| Storage temperature | -10~60℃ | | | |
| Storage humidity | 10~90% non-condensing | | | |
| Shockproof test | 10~25Hz (X, Y, Z direction, 2G, 30 minutes) | | | |
| Cooling method | Natural air cooling | | | |
| Certification | | | | |
| Degree of protection | IP65 (front panel) | | | |
| CE certification | Comply with EN61000-6-2:2005 and EN61000-6-4:2007standards | | | |
| FCC compatibility | Complies with FCC Class A | | | |

MT5000 Series

Technical Specifications



| Model | MT5520T | MT5520T-DP | MT5520T-CAN | MT5520T-MPI |
|----------------------------------|--|-------------|-------------|-------------|
| Performance specification | | | | |
| Display | 10.4" TFT | | | |
| Resolution | 640×480 pixels | | | |
| Color | 65536 | | | |
| Backlight | 2 CCFL | | | |
| Brightness | 400cd/m ² | | | |
| Backlight life | 50000 hr. | | | |
| Touch Panel | 4-wire precision resistance network | | | |
| Processor | 32-bit RISC CPU 520MHz | | | |
| Memory | 16M FLASH, 32M SDRAM | | | |
| Recipe memory & RTC | 512KB & RTC | | | |
| Expandable memory | 1 SD Card, 2 USB HOST | | | |
| Printer port | USB/Serial port | | | |
| Ethernet | 10/100 Base-T | | | |
| Audio interface | 1 Audio output interface | | | |
| Vedio interface | None | | | |
| Program download | 1 USB SLAVE port/Serial port/Ethernet port | | | |
| COM port | COM0:RS232/RS485-2/RS485-4, COM1:RS232/RS485-2/RS485-4, COM2:RS232 | | | |
| Expansion port | None | Profibus-DP | CANopen | MPI |
| Electrical specification | | | | |
| Rated power | 12 W | | | |
| Rated voltage | DC24V | | | |
| Input range | 21~28VDC | | | |
| Momentary power-off | <3ms | | | |
| Insulation resistance | Greater than 50MΩ @ 500V DC | | | |
| Dielectric strength test | 500V AC 1 minute | | | |
| Structure specification | | | | |
| Shell color | Light-gray | | | |
| Shell material | ABS | | | |
| Dimensions(mm) | 310.6×230.6×55.7 | | | |
| Cutout size(mm) | 298×218 | | | |
| Weight | 2kg | | | |
| Environment specification | | | | |
| Operating temperature | 0~45℃ | | | |
| Operating humidity | 10~90% non-condensing | | | |
| Storage temperature | -10~60℃ | | | |
| Storage humidity | 10~90% non-condensing | | | |
| Shockproof test | 10~25Hz (X, Y, Z direction, 2G, 30 minutes) | | | |
| Cooling method | Natural air cooling | | | |
| Certification | | | | |
| Degree of protection | IP65 (front panel) | | | |
| CE certification | Comply with EN61000-6-2:2005 and EN61000-6-4:2007standards | | | |
| FCC compatibility | Complies with FCC Class A | | | |

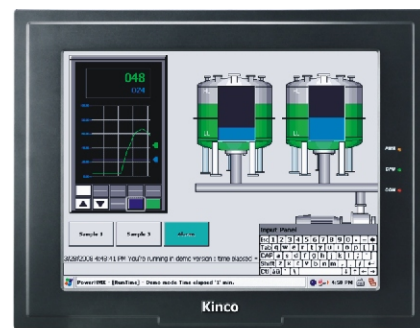
MT5000 Series

Technical Specifications



| Model | MT5620T | MT5620T-DP | MT5620T-CAN | MT5620T-MPI |
|----------------------------------|--|-------------|-------------|-------------|
| Performance specification | | | | |
| Display | 12.1" TFT | | | |
| Resolution | 800×600 pixels | | | |
| Color | 65536 | | | |
| Backlight | 2 CCFL | | | |
| Brightness | 250cd/m ² | | | |
| Backlight life | 50000 hr. | | | |
| Touch Panel | 4-wire precision resistance network | | | |
| Processor | 32-bit RISC CPU 520MHz | | | |
| Memory | 16M FLASH, 32M SDRAM | | | |
| Recipe memory & RTC | 512KB & RTC | | | |
| Expandable memory | 1 SD Card, 2 USB HOST | | | |
| Printer port | USB/Serial port | | | |
| Ethernet | 10/100 Base-T | | | |
| Audio interface | 1 Audio output interface | | | |
| Vedio interface | 2 PAL signal video input interface,BNC connector | | | |
| Program download | 1 USB SLAVE port/Serial port/Ethernet port | | | |
| COM port | COM0:RS232/RS485-2/RS485-4, COM1:RS232/RS485-2/RS485-4, COM2:RS232 | | | |
| Expansion port | None | Profibus-DP | CANopen | MPI |
| Electrical specification | | | | |
| Rated power | 15.6 W | | | |
| Rated voltage | DC24V | | | |
| Input range | 21~28VDC | | | |
| Momentary power-off | <3ms | | | |
| Insulation resistance | Greater than 50MΩ @ 500V DC | | | |
| Dielectric strength test | 500V AC 1 minute | | | |
| Structure specification | | | | |
| Shell color | Black | | | |
| Shell material | Metal | | | |
| Dimensions(mm) | 350×264×48.7 | | | |
| Cutout size(mm) | 327×241 | | | |
| Weight | 4.3kg | | | |
| Environment specification | | | | |
| Operating temperature | -10~60℃ | | | |
| Operating humidity | 10~90% non-condensing | | | |
| Storage temperature | -20~70℃ | | | |
| Storage humidity | 10~90% non-condensing | | | |
| Shockproof test | 10~25Hz (X, Y, Z direction, 2G, 30 minutes) | | | |
| Cooling method | Natural air cooling | | | |
| Certification | | | | |
| Degree of protection | IP65 (front panel) | | | |
| CE certification | Comply with EN61000-6-2:2005 and EN61000-6-4:2007standards | | | |
| FCC compatibility | Complies with FCC Class A | | | |

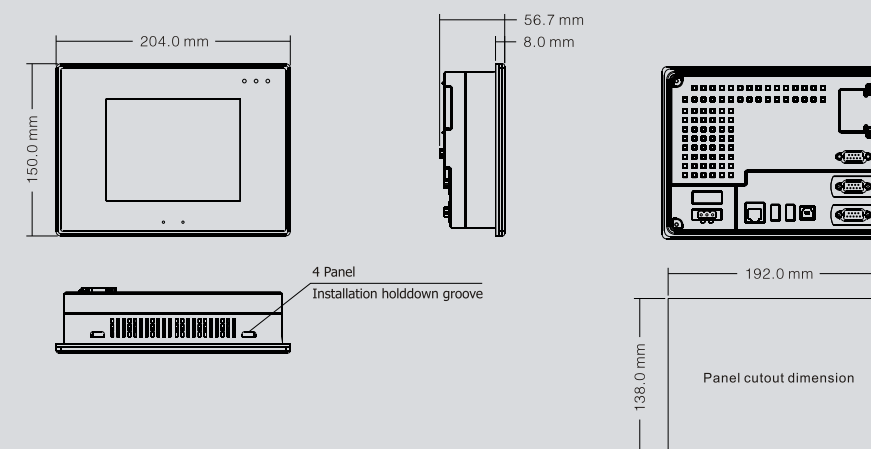
MT5000 Series Technical Specifications



| Model | MT5720T | MT5720T-DP | MT5720T-CAN | MT5720T-MPI |
|----------------------------------|--|-------------|-------------|-------------|
| Performance specification | | | | |
| Display | 15" TFT | | | |
| Resolution | 1024×768 pixels | | | |
| Color | 65536 | | | |
| Backlight | 2 CCFL | | | |
| Brightness | 250cd/m ² | | | |
| Backlight life | 50000 hr. | | | |
| Touch Panel | 4-wire precision resistance network | | | |
| Processor | 32-bit RISC CPU 520MHz | | | |
| Memory | 16M FLASH, 32M SDRAM | | | |
| Recipe memory & RTC | 512KB & RTC | | | |
| Expandable memory | 1 SD Card, 2 USB HOST | | | |
| Printer port | USB/Serial port | | | |
| Ethernet | 10/100 Base-T | | | |
| Audio interface | 1 Audio output interface | | | |
| Vedio interface | 2 PAL signal video input interface,BNC connector | | | |
| Program download | 1 USB SLAVE port/Serial port/Ethernet port | | | |
| COM port | COM0:RS232/RS485-2/RS485-4, COM1:RS232/RS485-2/RS485-4, COM2:RS232 | | | |
| Expansion port | None | Profibus-DP | CANopen | MPI |
| Electrical specification | | | | |
| Rated power | 16.8 W | | | |
| Rated voltage | DC24V | | | |
| Input range | 21~28VDC | | | |
| Momentary power-off | <3ms | | | |
| Insulation resistance | Greater than 50MΩ @ 500V DC | | | |
| Dielectric strength test | 500V AC 1 minute | | | |
| Structure specification | | | | |
| Shell color | Black | | | |
| Shell material | Metal | | | |
| Dimensions(mm) | 406.5×313.5×48.3 | | | |
| Cutout size(mm) | 387.5×294.5 | | | |
| Weight | 5.1kg | | | |
| Environment specification | | | | |
| Operating temperature | 0~50℃ | | | |
| Operating humidity | 10~90% non-condensing | | | |
| Storage temperature | -20~60℃ | | | |
| Storage humidity | 10~90% non-condensing | | | |
| Shockproof test | 10~25Hz (X, Y, Z direction, 2G, 30 minutes) | | | |
| Cooling method | Natural air cooling | | | |
| Certification | | | | |
| Degree of protection | IP65 (front panel) | | | |
| CE certification | Comply with EN61000-6-2:2005 and EN61000-6-4:2007standards | | | |
| FCC compatibility | Complies with FCC Class A | | | |

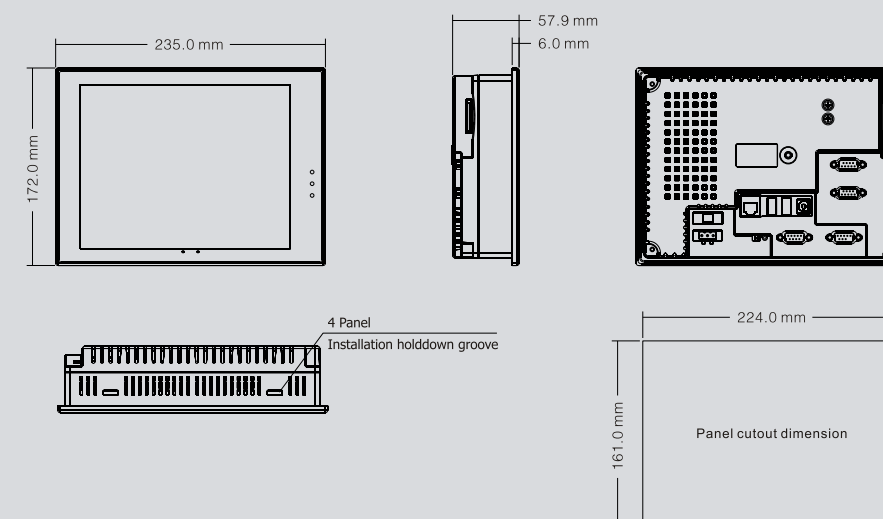
Dimensions (Unit:mm)

MT5320C
MT5320C-DP
MT5320C-CAN
MT5320C-MPI



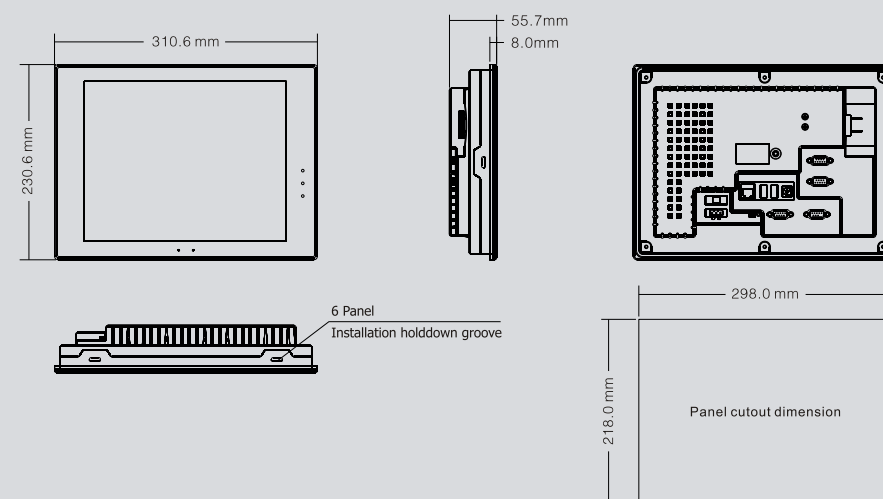
MT5320T
MT5320T-DP
MT5320T-CAN
MT5320T-MPI

MT5420T
MT5420T-DP
MT5420T-CAN
MT5420T-MPI

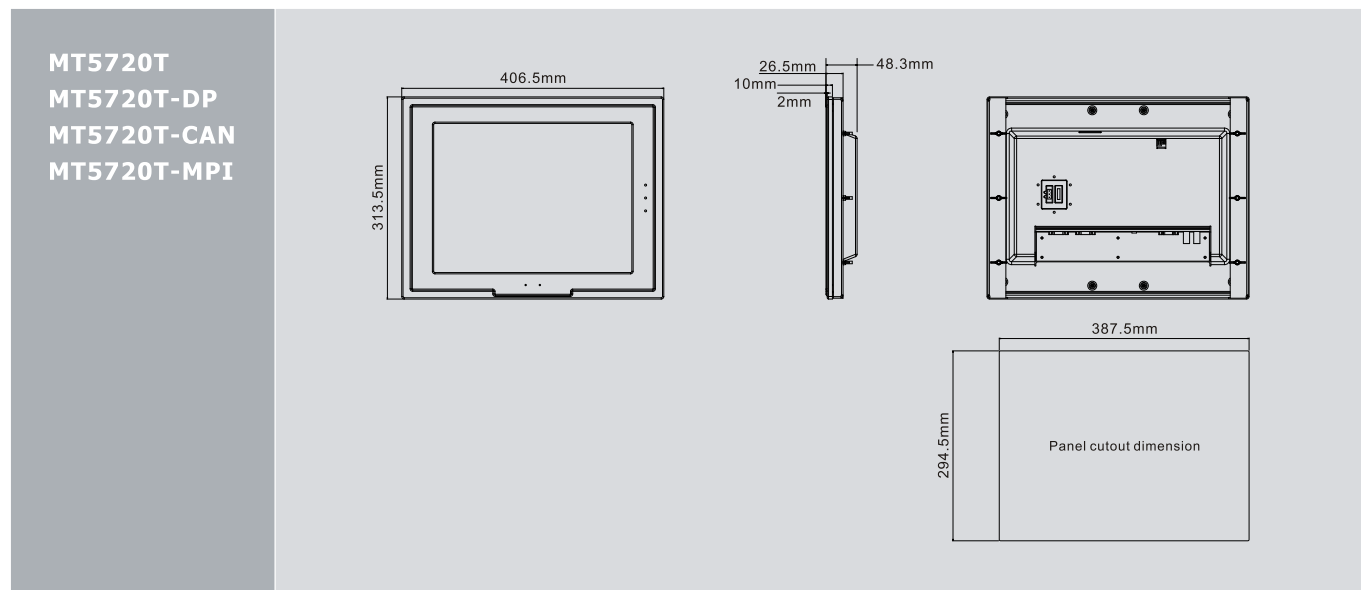
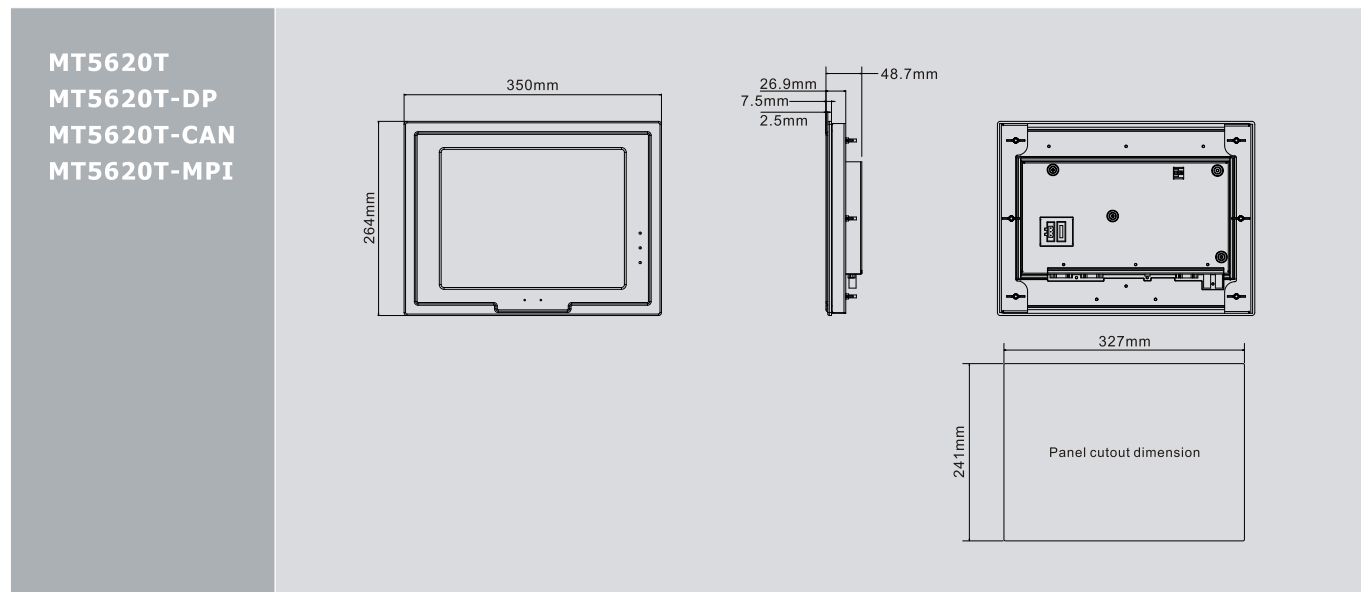


MT5423T
MT5423T-DP
MT5423T-CAN
MT5423T-MPI

MT5520T
MT5520T-DP
MT5520T-CAN
MT5520T-MPI



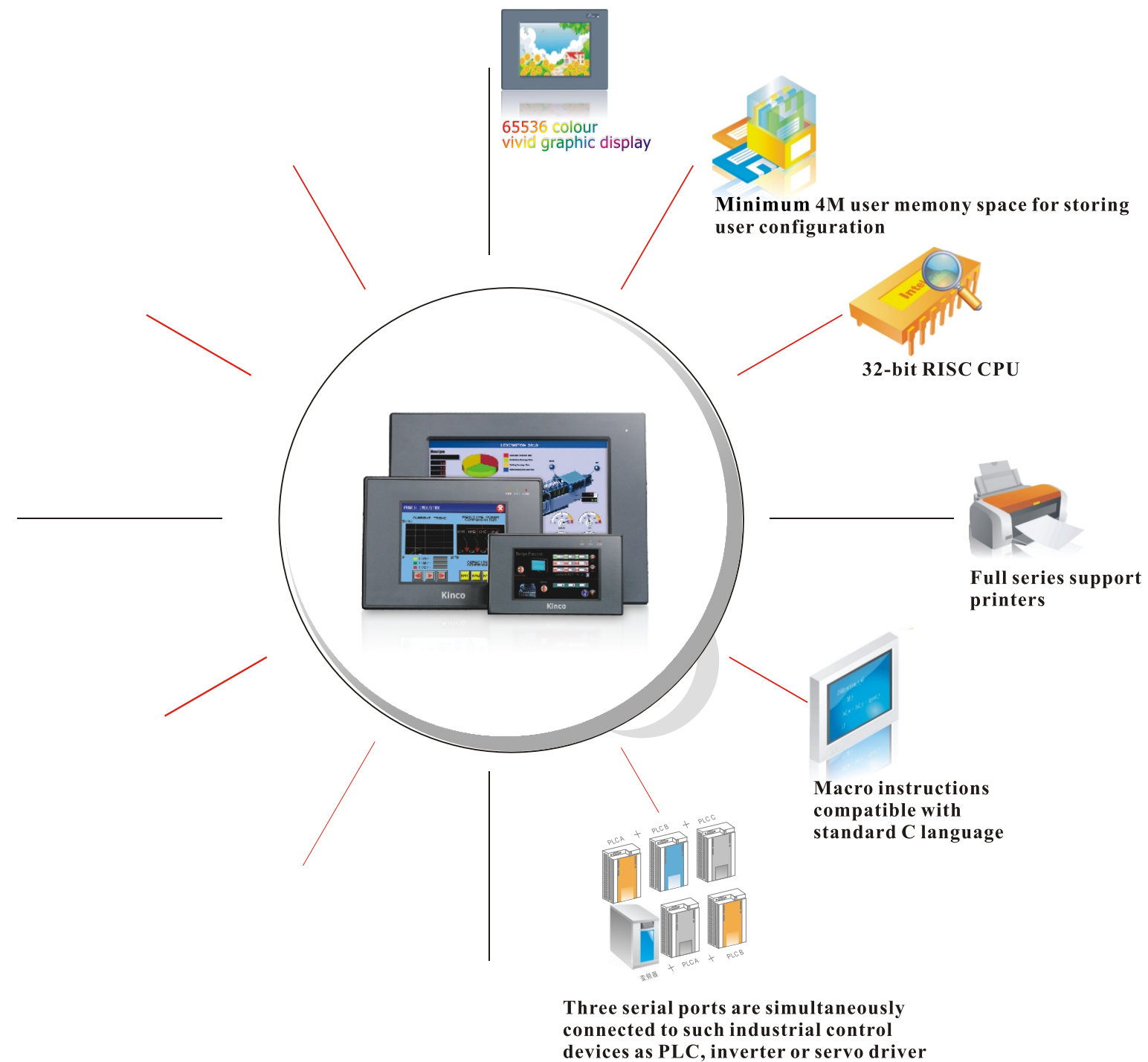
Dimensions (Unit:mm)



System Description

As the industrial competition is getting fiercer, more and more customers demand HMI products featuring more powerful functions, more convenient operation, quicker response speed, and lower cost. As an upgraded version, the MT4000 is designed to meet customer requirements. It derives from our consistent efforts to improve HMI touch screens and represents one of the many high-performance products for industrial applications.

Inheriting most of the functions of the high-end MT5000 series, the MT4000 adopts the 32-bit RISC CPU, capable of calling complicated shapes and satisfying the requirements of most customers. It can communicate directly with many PLCs, while no special program is required for data transfer with these PLCs. In addition, it supports such functions as online simulation, super-large storage space for user configurations, and macros compatible with the standard C language. It can perform on-site data collection, processing, monitoring, and output in a quick, effective, and secure way.



Hardware Description

Standard configuration

- Three high-speed serial ports
- One USB SLAVE port
- One printer port



USB download greatly accelerates the download speed of user configurations



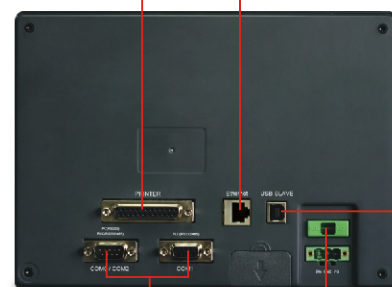
The traditional HMI uses a serial port to download, with the maximum download speed is about 11.5K bytes/s. MT4000 uses USB1.1 port to download data from device, with a speed as high as 100K bytes/s, which greatly improves the configuration download speed. (A new version capable of data exchange with USB flash disk is to be launched soon.)

Connected to printer with parallel port, Provide stable and smooth printing

Supporting the connection to mainstream ink-jet and laser printers and mini printers.



RJ45 Ethernet interface supports the connection between HMI and Ethernet controller or PC



Supporting simultaneous communications via multiple serial ports

MT4000 series support communication connection in RS232, RS485 and RS422 modes. The three communication ports of the standard hardware can support different PLC communication protocols at the same time and can be connected to different controllers. The three ports are completely independent. The PLC communication failure of one port will not affect the communication of the other port, featuring high reliability.



Quick-melting fuse to ensure the safety of machines in emergencies

MT4000 Series Features



- 10M/100M Ethernet interface, supports Ethernet communication based on CS structure, could be used for the setting of system parameters and online simulation of project configuration, multiple HMIs could be linked via Ethernet, could communicate with PC and PLC via Ethernet interface, could exchange data with controller which supports Ethernet communication via OPC software (only applicable to MT4000E series);
- 65536 true color TFT LCD, supports the import multiple windows image formats, such as BMP, JPG, GIF; supports all fonts of windows platform, supports 4 languages of interface display;
- 32-bit, 400MHz RISC CPU;
- 8M FLASH ROM + 16M SDRAM, larger storage space;
- Compatible with major PLCs and controllers, could provide customer-made communication drive program rapidly;
- 256KB recipe memory, could record data easily, convenient for user to inquire;
- Supports the timing of a minimum of 100ms, configured with multiple functions such as timing data transfer, value accumulation, decrease and macro instruction;
- Real-time clock, could reserve time for more than 2 years at power-off state;
- 3 COM ports, supports simultaneous communications with controllers of 3 different protocols, supports RS232/RS422/RS485 mode;
- 1 USB SLAVE port, greatly accelerates the download speed of user configuration;
- One DB15/DB25 printer port;
- Powerful configuration software-EV5000 supports macro commands and provides rich drawing library.

MT4000 Series Technical Specifications



MT4210T



MT4220TE

| Model | MT4210T | MT4220TE |
|----------------------------------|--|-------------------------------------|
| Performance specification | | |
| Display | 4.3" TFT | |
| Resolution | 480×272 pixels | |
| Color | 65536 colors | |
| Backlight | LED | |
| Brightness | 300cd/m ² | |
| Backlight life | 50000 hr. | |
| Touch Panel | 4-wire precision resistance network | |
| Processor | 32-bit RISC CPU 400MHz | 32-bit RISC CPU 800MHz |
| Memory | 128M FLASH + 64M SDRAM | |
| Expandable memory | None | 1 USB host, 1 SD card |
| Recipe memory & RTC | 512KB + RTC | |
| Printer port | Serial port | Serial port/USB port |
| Ethernet | None | Support |
| Program download | USB SLAVE/Serial port | USB SLAVE/Serial port/Ethernet port |
| COM port | COM0:RS232/RS485-2/RS485-4, COM2:RS232 | |
| Electrical specification | | |
| Rated power | 3.5 W | |
| Rated voltage | DC24V | |
| Input range | 12~28VDC | |
| Power down allowed | <3ms | |
| Insulation resistance | Greater than 50MΩ @ 500V DC | |
| Dielectric strength test | 500VAC 1 minute | |
| Structure specification | | |
| Shell color | Black | |
| Shell material | ABS | |
| Dimensions(mm) | 154×89×59.8 | |
| Cutout size(mm) | 145×81 | |
| Weight | 0.34kg | |
| Environment specification | | |
| Operating temperature | -20~55℃ | |
| Operating humidity | 10~90% non-condensing | |
| Storage temperature | -25~60℃ | |
| Storage humidity | 10~90% non-condensing | |
| Shockproof test | 10~25Hz (X, Y, Z direction, 2G, 30 minutes) | |
| Cooling method | Natural air cooling | |
| Certification | | |
| Degree of protection | IP65 (front panel) | |
| CE certification | Comply with EN61000-6-2:2005 and EN61000-6-4:2007standards | |
| FCC compatibility | Complies with FCC Class A | |

MT4000 Series Technical Specifications



MT4300C/MT4300CE



MT4300T/MT4300TE

| Model | MT4300C | MT4300CE | MT4300T | MT4300TE |
|----------------------------------|--|-------------------------------------|-----------------------|-------------------------------------|
| Performance specification | | | | |
| Display | 5.6" TFT | | 5.7" TFT | |
| Resolution | 320×234 pixels | | 320×240 pixels | |
| Color | 65536 colors | | | |
| Backlight | LED | | 1CCFL | |
| Brightness | 300cd/m ² | | 500cd/m ² | |
| Backlight life | 50000 hr. | | | |
| Touch Panel | 4-wire precision resistance network | | | |
| Processor | 32-bit RISC CPU 400MHz | | | |
| Memory | 8M FLASH, 16M SDRAM | | | |
| Expandable memory | None | | | |
| Recipe memory & RTC | 256KB & RTC | | | |
| Printer port | DB15/Serial port | | | |
| Ethernet | None | Support | None | Support |
| Program download | USB SLAVE/Serial port | USB SLAVE/Serial port/Ethernet port | USB SLAVE/Serial port | USB SLAVE/Serial port/Ethernet port |
| COM port | COM0:RS232/RS485-2/RS485-4, COM1:RS232/RS485-2/RS485-4, COM2:RS232 | | | |
| Electrical specification | | | | |
| Rated power | 6 W | | 9.6 W | |
| Rated voltage | DC24V | | DC24V | |
| Input range | 12~28VDC | | 21~28VDC | |
| Power down allowed | <5ms | | | |
| Insulation resistance | Greater than 50MΩ @ 500V DC | | | |
| Dielectric strength test | 500V AC 1 minute | | | |
| Structure specification | | | | |
| Shell color | Black | | | |
| Shell material | ABS | | | |
| Dimensions(mm) | 204×150×52 | | | |
| Cutout size(mm) | 192×138 | | | |
| Weight | 0.85kg | | | |
| Environment specification | | | | |
| Operating temperature | 0~45℃ | | -10~70℃ | |
| Operating humidity | 10~90% non-condensing | | | |
| Storage temperature | -10~60℃ | | -20~75℃ | |
| Storage humidity | 10~90% non-condensing | | | |
| Shockproof test | 10~25Hz (X, Y, Z direction, 2G, 30 minutes) | | | |
| Cooling method | Natural air cooling | | | |
| Certification | | | | |
| Degree of protection | IP65 (front panel) | | | |
| CE certification | Comply with EN61000-6-2:2005 and EN61000-6-4:2007standards | | | |
| FCC compatibility | Complies with FCC Class A | | | |

MT4000 Series Technical Specifications



MT4404T/MT4404TE
MT4424T/MT4424TE



MT4414T/MT4414TE

| Model | MT4404T | MT4404TE | MT4414T | MT4414TE | MT4424T | MT4424TE |
|----------------------------------|--|---|---|---|--|---|
| Performance specification | | | | | | |
| Display | 7" 16:9 TFT | | | | | |
| Resolution | 800×480 pixels | | | | | |
| Color | 65536 colors | | | | | |
| Backlight | LED | | | | | |
| Brightness | 300cd/m ² | | | | | |
| Backlight life | 50000 hr. | | | | | |
| Touch Panel | 4-wire precision resistance network | | | | | |
| Processor | 32-bit RISC CPU 400MHz | | 32-bit 800MHz RISC | | 32-bit RISC CPU 624MHz | |
| Memory | 8M FLASH, 16M SDRAM | | 128M FLASH, 64M SDRAM | | 128M FLASH, 64M Mobile DDR | |
| Expandable memory | None | | 1 USB host | | 1 USB host, 1 SD card | |
| Recipe memory & RTC | 256KB & RTC | | 512KB & RTC | | 128KB & RTC | |
| Printer port | Serial port | | | USB/Serial port | | |
| Ethernet | None | Support | None | Support | None | Support |
| Program download | USB SLAVE/ Serial port | USB SLAVE/ Serial port/ Ethernet port | USB SLAVE/ Serial port | USB SLAVE/ Serial port/ Ethernet port | USB SLAVE/ Serial port | USB SLAVE/ Serial port/ Ethernet port |
| COM port | COM0:RS232/RS485-2/RS485-4, COM1:RS232/RS485-2/RS485-4, COM2:RS232 | | COM0:RS232/RS485-2/RS485-4, COM2:RS232 | | COM0:RS232/RS485-2/RS485-4, COM1:RS232/RS485-2/RS485-4, COM2:RS232 | |
| Electrical specification | | | | | | |
| Rated power | 8W | | 4W | | 8W | |
| Rated voltage | DC24V | | DC24V | | DC24V | |
| Input range | DC21~28V | | DC12~28V | | DC21~28V | |
| Power down allowed | <5ms | | <3ms | | <5ms | |
| Insulation resistance | Greater than 50MΩ @ 500V DC | | | | | |
| Dielectric strength test | 500V AC 1 minute | | | | | |
| Structure specification | | | | | | |
| Shell color | Black | | | | | |
| Shell material | ABS | | | | | |
| Dimensions(mm) | 206.8×124.2×45.1 | | 204×150×37 | | 206.8×124.2×45.1 | |
| Cutout size(mm) | 193.5×112.5 | | 192×138 | | 193.5×112.5 | |
| Weight | 0.8kg | | 0.75kg | | 0.8kg | |
| Environment specification | | | | | | |
| Operating temperature | 0~45℃ | | 0~45℃ | | 0~45℃ | |
| Operating humidity | 10~90% non-condensing | | | | | |
| Storage temperature | -10~60℃ | | -10~60℃ | | -10~60℃ | |
| Storage humidity | 10~90% non-condensing | | | | | |
| Shockproof test | 10~25Hz (X, Y, Z direction, 2G, 30 minutes) | | | | | |
| Cooling method | Natural air cooling | | | | | |
| Certification | | | | | | |
| Degree of protection | IP65 (front panel) | | | | | |
| CE certification | Comply with EN61000-6-2:2005 and EN61000-6-4:2007standards | | | | | |
| FCC compatibility | Complies with FCC Class A | | | | | |

MT4000 Series Technical Specifications



MT4403T/MT4403TE



MT4512T/MT4512TE
MT4522T/MT4522TE

| Model | MT4403T | MT4403TE | MT4512T | MT4512TE | MT4522T | MT4522TE |
|----------------------------------|--|---|---|---|--|---|
| Performance specification | | | | | | |
| Display | 8" TFT | | 10.1" 16:9 TFT | | 10.1" 16:9 TFT | |
| Resolution | 800×600 pixels | | 800×480 pixels | | 800×480 pixels | |
| Color | 65536 colors | | 65536 colors | | 65536 colors | |
| Backlight | LED | | LED | | LED | |
| Brightness | 250cd/m ² | | 320cd/m ² | | 320cd/m ² | |
| Backlight life | 50000 hr. | | | | | |
| Touch Panel | 4-wire precision resistance network | | | | | |
| Processor | 32-bit RISC CPU 400MHz | | 32-bit 800MHz RISC | | 32-bit RISC CPU 400MHz | |
| Memory | 8M FLASH, 32M SDRAM | | 128M FLASH, 64M SDRAM | | 16M FLASH, 32M SDRAM | |
| Expandable memory | None | | 1 USB host | | 1 USB Host, 1 SD Card | |
| Recipe memory & RTC | 256KB & RTC | | 512KB & RTC | | 256KB & RTC | |
| Printer port | DB25/Serial port | | Serial port | | USB/Serial port | |
| Ethernet | None | Support | None | Support | None | Support |
| Program download | USB SLAVE/ Serial port | USB SLAVE/ Serial port/ Ethernet port | USB SLAVE/ Serial port | USB SLAVE/ Serial port/ Ethernet port | USB SLAVE/ Serial port | USB SLAVE/ Serial port/ Ethernet port |
| COM port | COM0:RS232/RS485-2/RS485-4, COM1:RS232/RS485-2/RS485-4, COM2:RS232 | | COM0:RS232/RS485-2/RS485-4, COM2:RS232 | | COM0:RS232/RS485-2/RS485-4, COM1:RS232/RS485-2/RS485-4, COM2:RS232 | |
| Electrical specification | | | | | | |
| Rated power | 8W | | 8W | | 8W | |
| Rated voltage | DC24V | | DC24V | | DC24V | |
| Input range | DC12~28V | | DC12~28V | | DC12~DC28V | |
| Power down allowed | <5ms | | | | | |
| Insulation resistance | Greater than 50MΩ @ 500V DC | | | | | |
| Dielectric strength test | 500V AC 1 minute | | | | | |
| Structure specification | | | | | | |
| Shell color | Black | | Black | | Black | |
| Shell material | ABS | | ABS | | ABS | |
| Dimensions(mm) | 235×172×53 | | 310×230×55 | | 310×230×58 | |
| Cutout size(mm) | 224×161 | | 298×218 | | 298×218 | |
| Weight | 1.3kg | | 2kg | | 2kg | |
| Environment specification | | | | | | |
| Operating temperature | -10~45℃ | | 0~45℃ | | 0~45℃ | |
| Operating humidity | 10~90% non-condensing | | | | | |
| Storage temperature | -20~60℃ | | -10~60℃ | | -10~60℃ | |
| Storage humidity | 10~90% non-condensing | | | | | |
| Shockproof test | 10~25Hz (X, Y, Z direction, 2G, 30 minutes) | | | | | |
| Cooling method | Natural air cooling | | | | | |
| Certification | | | | | | |
| Degree of protection | IP65 (front panel) | | | | | |
| CE certification | Comply with EN61000-6-2:2005 and EN61000-6-4:2007standards | | | | | |
| FCC compatibility | Complies with FCC Class A | | | | | |

MT4000 Series Technical Specifications



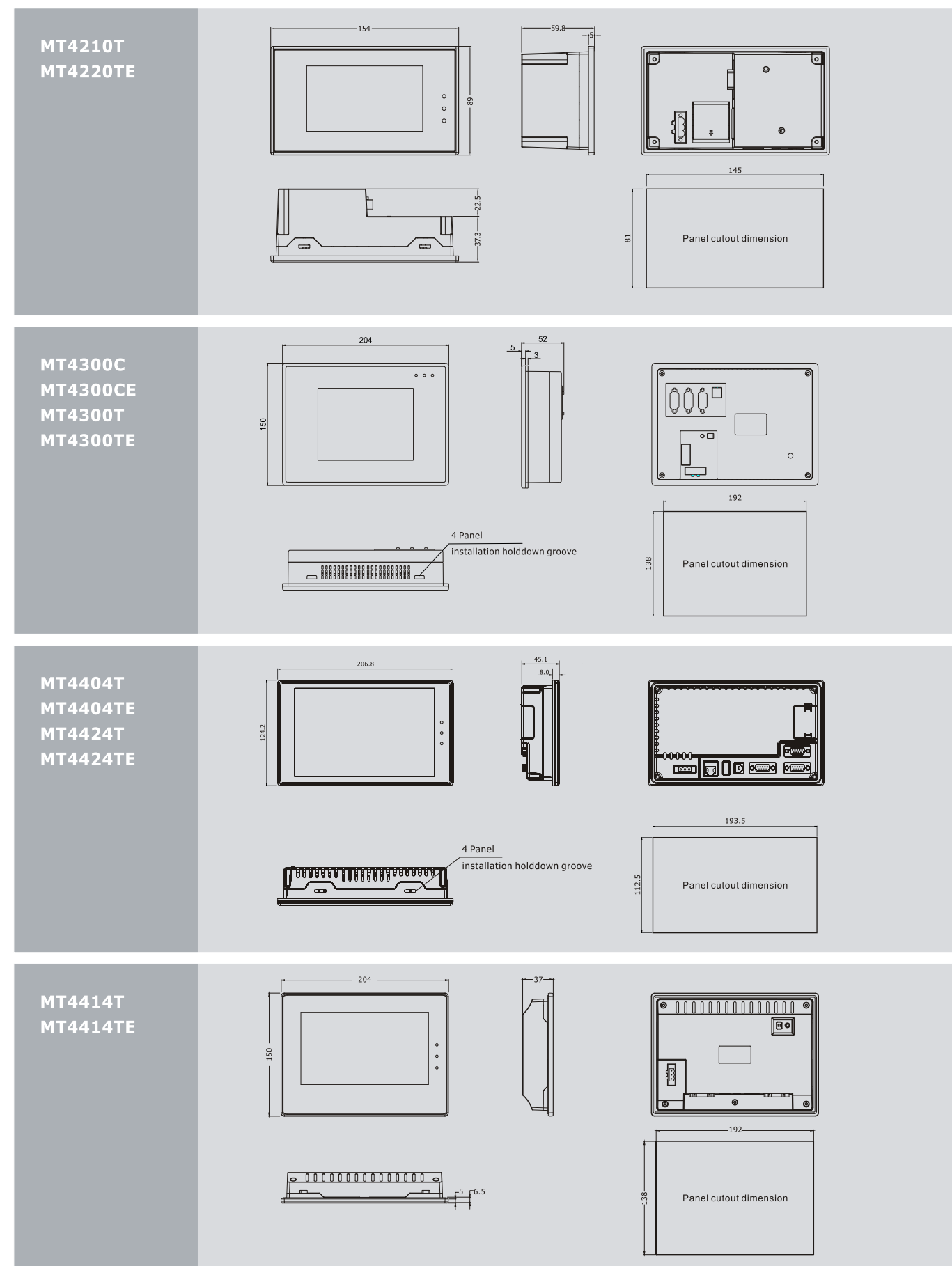
MT4523T/MT4523TE



MT4620TE

| Model | MT4523T | MT4523TE | MT4620TE |
|----------------------------------|--|-------------------------------------|-------------------------------------|
| Performance specification | | | |
| Display | 10.4" 16:9 TFT | | 12.1" TFT |
| Resolution | 800×600 pixels | | 800×600 pixels |
| Color | 65536 colors | | 65536 colors |
| Backlight | LED | | LED |
| Brightness | 300cd/m ² | | 450cd/m ² |
| Backlight life | 50000 hr. | | |
| Touch Panel | 4-wire precision resistance network | | |
| Processor | 32-bit RISC CPU 520MHz | | 32-bit RISC CPU 800MHz |
| Memory | 16M FLASH, 32M SDRAM | | 1Gbit NAND Flash + 64M DDR2-667 |
| Expandable memory | 1 SD Card, 1 USB HOST | | 1 SD Card, 1 USB HOST |
| Recipe memory & RTC | 256KB & RTC | | 128KB & RTC |
| Printer port | USB SLAVE/Serial port | | USB SLAVE/Serial port/Ethernet port |
| Ethernet | None | Support | Support |
| Program download | USB SLAVE/Serial port | USB SLAVE/Serial port/Ethernet port | USB SLAVE/Serial port/Ethernet port |
| COM port | COM0:RS232/RS485-2/RS485-4, COM1:RS232/RS485-2/RS485-4, COM2:RS232 | | |
| Electrical specification | | | |
| Rated power | 12 W | | 10 W |
| Rated voltage | DC24V | | DC24V |
| Input range | DC12~DC28V | | DC21~DC28V |
| Power down allowed | <5ms | | |
| Insulation resistance | Greater than 50MΩ @ 500V DC | | |
| Dielectric strength test | 500V AC 1 minute | | |
| Structure specification | | | |
| Shell color | Black | | Cold gray |
| Shell material | ABS | | ABS |
| Dimensions(mm) | 310×230×55 | | 350×260×54 |
| Cutout size(mm) | 298×218 | | 340×250 |
| Weight | 2kg | | 4.4kg |
| Environment specification | | | |
| Operating temperature | 0~45℃ | | -10~55℃ |
| Operating humidity | 10~90% non-condensing | | |
| Storage temperature | -10~60℃ | | -20~60℃ |
| Storage humidity | 10~90% non-condensing | | |
| Shockproof test | 10~25Hz (X, Y, Z direction, 2G, 30 minutes) | | |
| Cooling method | Natural air cooling | | |
| Certification | | | |
| Degree of protection | IP65 (front panel) | | |
| CE certification | Comply with EN61000-6-2:2005 and EN61000-6-4:2007standards | | |
| FCC compatibility | Complies with FCC Class A | | |

Dimensions (Unit:mm)



Dimensions (Unit:mm)

**MT4403T
MT4403TE**

235
172
53
6
3
224
161
Panel cutout dimension
4 Panel
Installation hold-down groove

**MT4512T
MT4512TE
MT4522T
MT4522TE
MT4523T
MT4523TE**

310
230
54
8
39.2
298
218
Panel cutout dimension
6 Panel
Installation hold-down groove

MT4620TE

350
260
54
12.8
4
340
250
Panel cutout dimension

Software Description

Operation window:

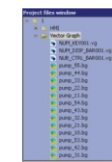
A simple and practical platform for project design and editing

- Completing all functions from editing components library and simulation compilation, to download;
- Browse various project information and make better adjustment in time.

Project file window

Facilitate in modifying components library

- Click an image library file, and the user can browse and edit the file;
- Visual understanding of the HMI quantity used.



All windows can be dragged freely, and a user can create individualized operation interfaces according to his/her own habits.

Menu bar:

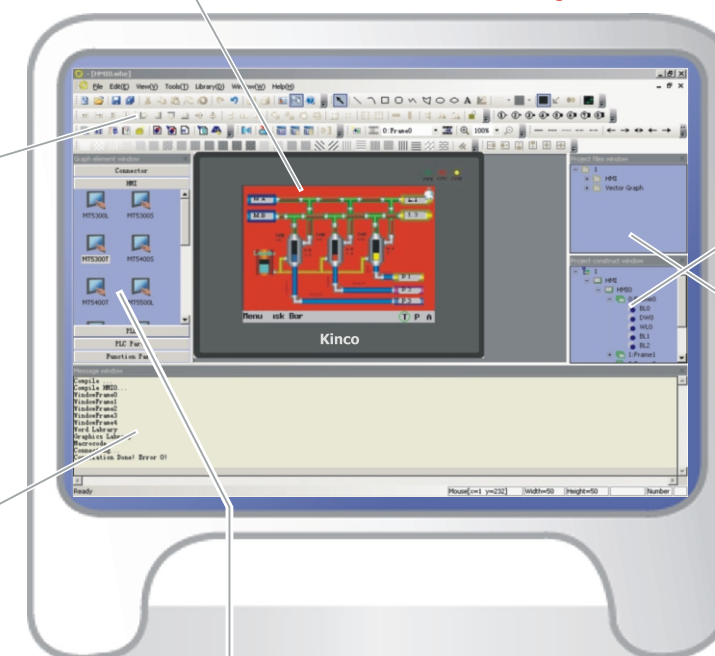
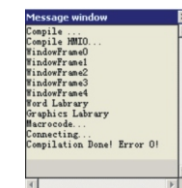
True color icon, visual and convenient navigation

- Familiar icon style for most users, easy to use;
- Simple and visual function.

Compilation information window

Display compilation progress

After compilation display, the user can download files.



Components library window

Five components libraries, meeting design requirements



Communication connection

Touch screen

PLC

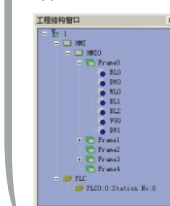
PLC components

Functional components

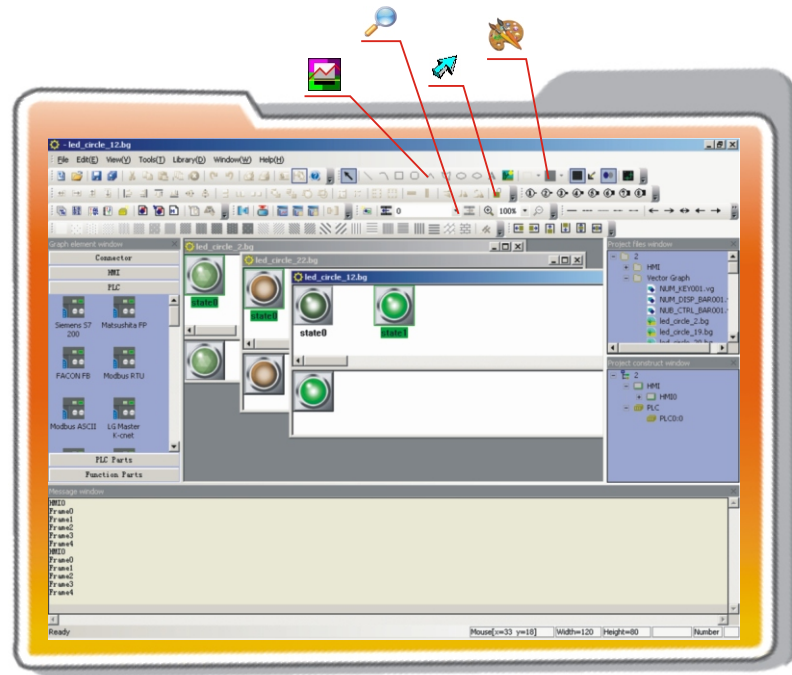
Project structure window

Master the conditions of the entire project

Master the HMI, HMI components and PLC type used for the entire project.



Software Description



Completely support contrast and brightness adjustment

The contrast and brightness of the LCD can be adjusted online through setting special register without the need to adjust them by means of jumper switch or potentiometer.

Rich components library resources Facilitate in making beautiful configuration interfaces

The original components libraries of the EV5000 can meet design requirements in most cases. If a customer has special requirement, he can build own graph library with the drawing tools of EV5000 software. EV5000 has a huge number of 3D effect components which facilitate in making mobile 3D graphics and animation.

Digital photos/Corporate logo import

The EV5000 supports the import of multiple Windows image formats, such as JPEG, GIF and BMP. The user can import their own logo or other images as initial screen.

Supporting all fonts of the Windows platform

In graphic mode, static text can be displayed in any fonts supported by the windows system on the configuration interface. The user has more choice for fonts now.

Recipe editing function

Providing 256K Words recipe memory, without any loss upon power failure, facilitating the setting and modification of initial values of the equipment, capable of providing multiple different recipes for the controller.

Perfect event log function

It can store records of events occurred during production, without any loss upon power failure, facilitating invocation anytime; if necessary, this function can be used to learn the operational history of the equipment and improve the design of the process flow.

Powerful vector graphic function, supporting drawing of arcs, sectors, scales and pointers at any angle

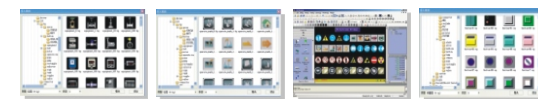
- Eight line width options
- Three-level zoom-in/zoom-out display
- Supporting drawing of various vector-based image
- User-defined color filling in multiple modes

Password protection

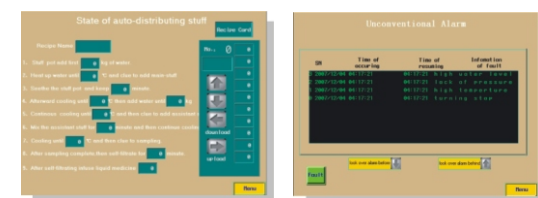
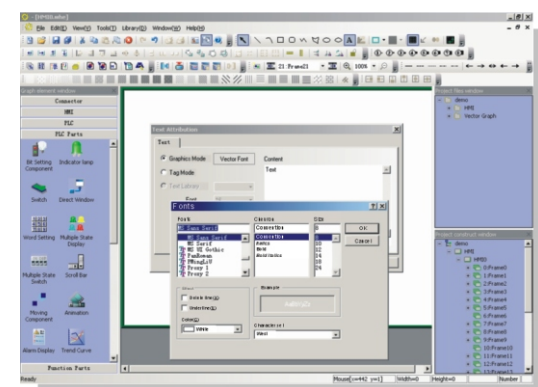
Three different authority levels, authorized operators can execute necessary setting and operations according to their authority level. The security performance of the system is greatly enhanced.

Multi-language application environment

Any language supported by Windows can be displayed on the panel. The user can use up to 4 languages within a project, which makes it possible for global users to share their wisdom with their clients worldwide.



Bitmap image Vector graph



Software Description



Learn compiling macro commands in ten minutes

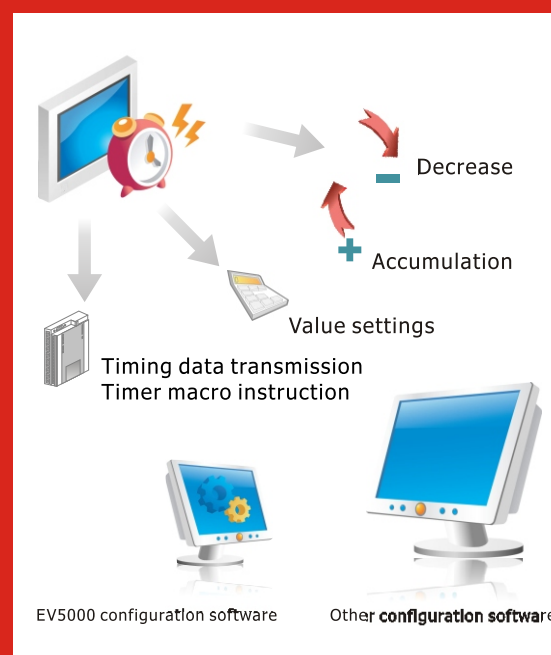
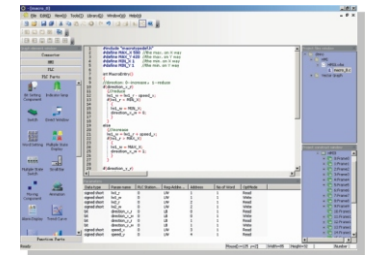
Macro codes compatible with standard C language can be triggered in multiple methods, featuring powerful function and flexible use.

In the past

Most HMIs in the market use respectively defined script languages, lack of versatility, which are hard to learn since there is no sufficient reference resources, and furthermore they cannot be implanted into other HMI panels.

Present

The EV5000 provides unique macro instruction compilation fully compatible with the standard C language. If you are familiar with the C language, you can learn how to code macro instructions in ten minutes. The rich reference documents, powerful function, and easy portability greatly enhance the macro command function of the EV5000.



Powerful online networking and synchronous communication function and rapid processing speed have simplified the complicated process flow design.

Powerful timer function

- iThe timer of MT5000 can implement the timing of a minimum of 100 ms, featuring accurate timing;
- iConfigured with multiple functions such as timed data transfer, value settings, accumulation, decrease, and timed macro instruction;
- iMultiple trigger modes such as register trigger and initialization trigger, to facilitate users in implementing flexible configuration programming.

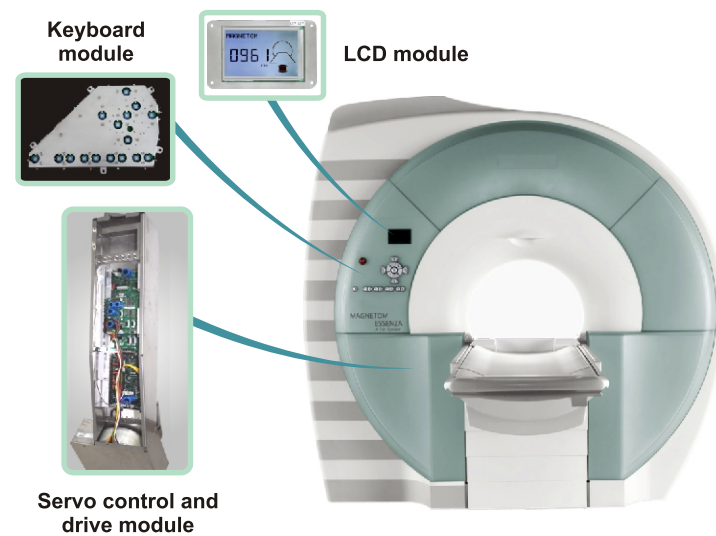
Customizable startup LOGO window

Different from other HMIs which do not have any screen display upon startup, the MT5000 can immediately display a user-defined LOGO upon power-on until the configuration window finishes startup, lasting about five seconds. The user can freely edit and modify the startup window.

Kinco provides important sub-system to a world-famous healthcare equipment manufacturer.

Kinco satisfies the most rigid quality requirement in healthcare industry.

- **System function:** control and drive the motion of patient table for MRI inspection.
- **Features:** Ultra-low RF emission, withstand strong magnetic interference.



KincoCut paper cutter control system

Together with leading paper cutter manufacture in China, Kinco presents advanced cutter control system at competitive cost.

- **Features:**
 - Advanced performance;
 - Optimized CIP3 and CIP4 technology, compatible with printing data format standard;
 - All major components from Kinco, ensure quality and competitive cost.



Operator Terminal for construction machine

KG/KW series operator terminal, serving famous heavy machine builders all over China.

- **Features:**
 - CAN bus interface;
 - Compatible with protocols of major controllers;
 - Enhanced structure design, withstand shock and extreme temperature;
 - Enhanced EMC design, withstand harsh interference;
 - User-friendly editing software.



Tower crane safety controller

Kinco-TB safety controller, compatible with GB/T5031-2008 standard, protect your assets and staff.

- **Features:**
 - Display system critical status and parameters in real time;
 - Alarm when critical status events occur;
 - Record system log;
 - Flexible and easy to be expanded.

